



## About This Property

The Town of Billerica and SVT collaboratively manage the Vietnam Veterans Park and Ralph Hill Conservation Area. Two of SVT's parcels here are separated by the Concord River: Ralph Hill Wood Lot sits on the west side of the river and Ralph Hill Homestead sits on the east. Both were gifts of Dr. Charles Stearns who named the land after an ancestor who farmed the land in the 17th century. His son later donated the small island midstream to SVT as well.

Vietnam Veterans Park was the first park in the United States dedicated to Vietnam Veterans. The Middlesex House of Corrections formerly used the upper part of the property as a working farm that provided dairy products and vegetables to the prison.

## Features of Note

- Approximately 2,000 feet of frontage along the Concord River is part of the federally designated Wild and Scenic Rivers corridor. The large rock outcroppings and dramatic slopes down to the river are especially scenic.
- Ralph Hill Homestead is a mixed pine and oak forest that includes white pines planted by Dr. Stearns' father.
- The southern portion of Ralph Hill Homestead skirts private property and leads to a grassy area and beach (with canoe access) owned by the Town of Billerica.
- The large beaver pond on the Town's land was once an active cranberry bog.
- Vietnam Veterans Park includes recreation areas featuring a soccer complex, a radio control flyer area, a BMX (bike) racetrack, a children's play area, and an equestrian area.

**Learn more:**

[www.svtweb.org/RalphHill](http://www.svtweb.org/RalphHill)

[www.town.billerica.ma.us](http://www.town.billerica.ma.us)



## Trail Policies and Regulations

The following are prohibited:

- Motorized vehicles
- Hunting or trapping
- Camping
- Bicycling (except on Farm Rd and green trail)
- Equestrians (except on Farm Rd)
- Fires
- Disposing of trash or yard waste
- Cutting or removing plants



Dog walkers:

- Billerica Town By-laws require that all dogs be leashed and that you clean up after your dog.
- Keep dogs out of ponds/streams/vernal pools.

*See our full dog-walking policy on the trail head kiosk.*

## Directions

With mapping software, search for this address:  
Farm Road, Billerica, MA

From Route 3 in Billerica, take Exit 28. Follow Treble Cove Road toward Carlisle for 0.5 mile. The entrance to the recreation area is on your left. Access to the trails is at the far right of the soccer fields.

## Support SVT

SVT protects open spaces and natural areas in 36 communities around the Sudbury, Assabet, and Concord Rivers. We care for thousands of acres of land that provide habitat for native wildlife, and we maintain more than 60 miles of trails for public enjoyment.

SVT relies upon the support of our members to be successful.

**Join Us! Help protect these lands forever.**

[www.svtweb.org](http://www.svtweb.org)

# Ralph Hill & Town of Billerica's Vietnam Veterans Park Trail Map



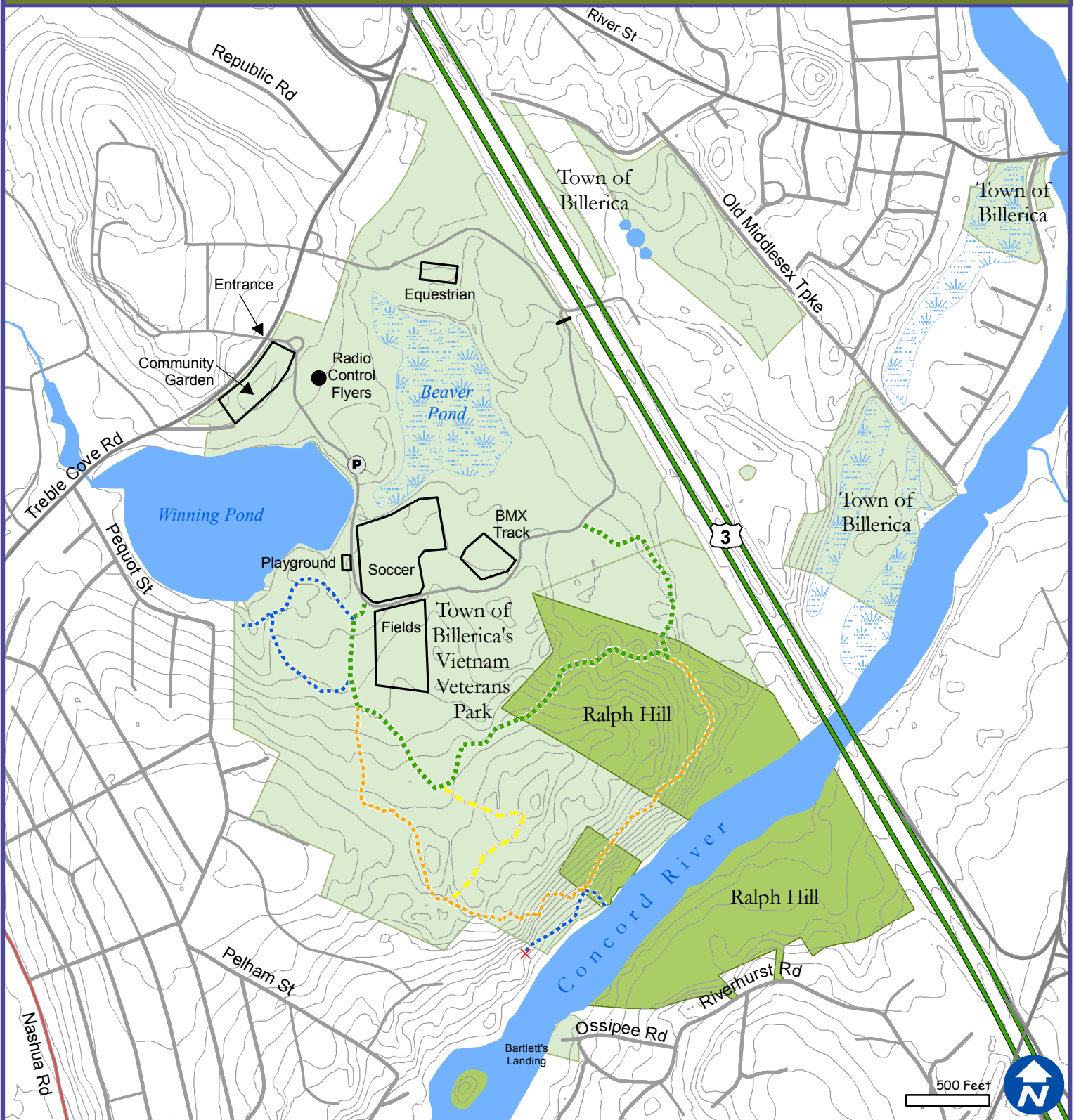
## BILLERICA



18 Wolbach Road  
Sudbury, MA 01776-2429  
978-443-5588  
[www.svtweb.org](http://www.svtweb.org)  
Facebook: @SudburyValleyTrust  
Twitter: @TweetSVT  
Instagram: sudbury\_valley\_trustees

Town of Billerica Recreation Department  
248 Boston Road Billerica, MA 01862  
978-671-0921  
[www.town.billerica.ma.us](http://www.town.billerica.ma.us)

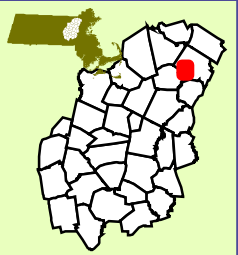
# Vietnam Veterans Park and Ralph Hill, Billerica



- P Parking
- - - - - Trail
- ~ ~ ~ ~ ~ Water Body
- Road
- SVT CR
- Town of Billerica
- Bridge
- x Private
- Wetland
- SVT



How to Get Here



## Love open spaces? Support SVT!

Sudbury Valley Trustees is a nonprofit conservation organization that protects land for the benefit of people and wildlife. Help us keep these trails open for all to enjoy. **Join or Donate today! [www.svtweb.org](http://www.svtweb.org)**

Map produced by Sudbury Valley Trustees. Data Provided by Office of Geographic and Environmental Information (MassGIS), Commonwealth of Massachusetts Executive Office of Energy and Environmental Affairs. This Map should be used for reference only. Boundary lines are approximate.